

**R.E:** As part of our focus on the Sacrament of Baptism the children created collages of the symbols of Baptism. Please ask your child if they can remember what these are.  
We will be continuing with the Sacrament of Baptism after half term.

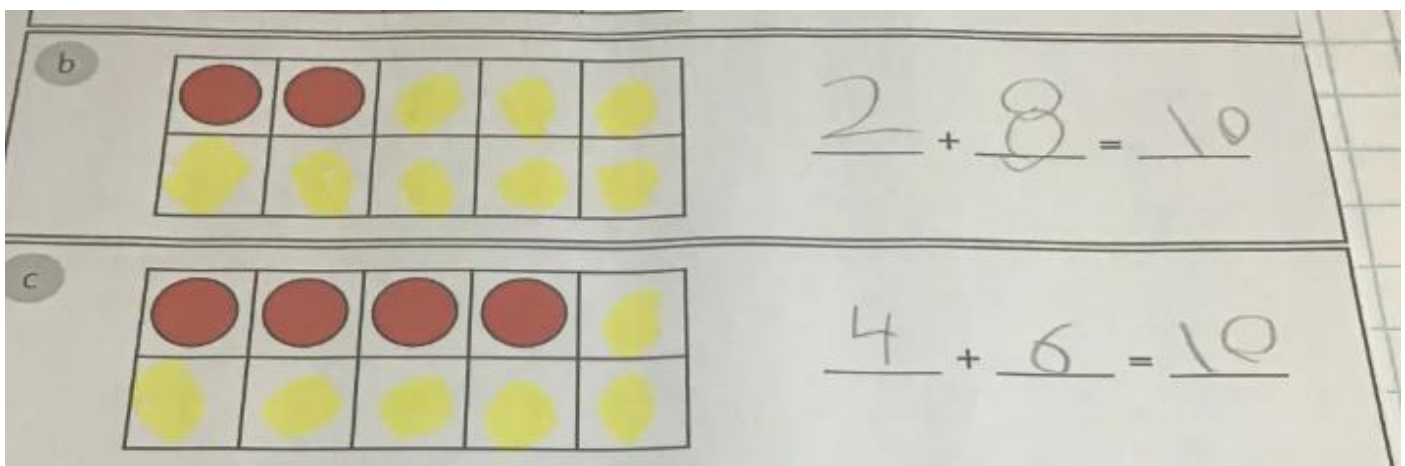
Key vocabulary: Belong, friends, invitation, Sign of the Cross, welcome, belonging, Baptism, godparents, sign, Sacrament, font, water, oil, candle

**English:** This week we have continued our work on the story Fatama and Mami Wata's Secret, an old African tale about a water goddess.

When we return after half term we will be working on instruction writing. It would be lovely if you could follow a simple recipe with your children, paying attention to the ingredients, equipment required and the method.

Key vocabulary: Full stop, capital letter, finger spaces

**Maths:** This week we have continued our work on the part-whole model on number bonds to 10. We have been writing addition sentences to match the part-whole models. We will continue this when we return.



Key vocabulary: part whole model, part, whole, addition, add, plus, equals

**Science:** This week we discussed how our senses keep us safe. Please discuss this with your child.  
We will begin a new topic after half term.

Key vocabulary: sight, hearing, smell, taste, touch.

**Extra information:**

There will be no homework given over half term as your child will have the words to learn for our Christmas performance. The link for the music is below.

<https://www.outoftheark.co.uk/the-angel-who-nearly-missed-it-all.html>

Enjoy the half term break.

Ann and Frankie

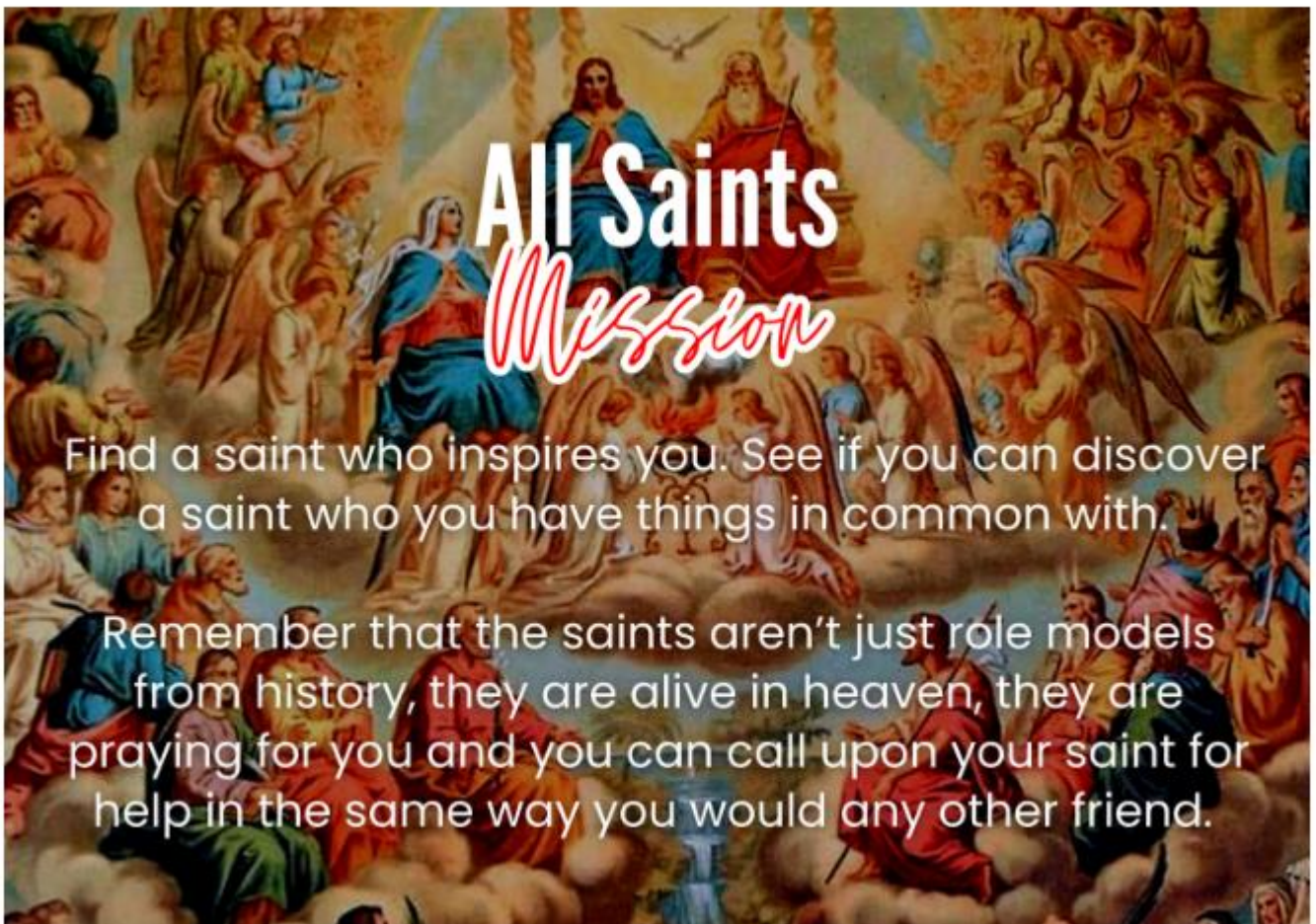
## Five Ways to Wellbeing Challenge

### CONNECT

As a class, a family or by yourself, celebrate the month of the Rosary by saying a Hail Mary each day or a decade of the Rosary or even a whole Rosary.

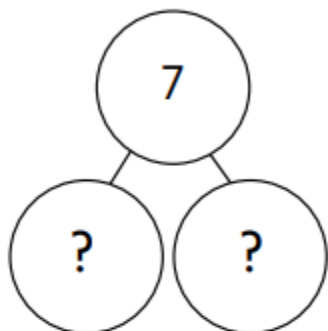
GIVE    BE ACTIVE    TAKE NOTICE    CONNECT    KEEP LEARNING

## THE MARK 10 *Mission*



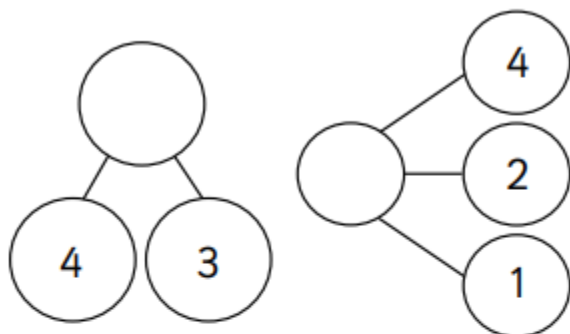
Problem solving and reasoning cards:

Each part is greater than 2.



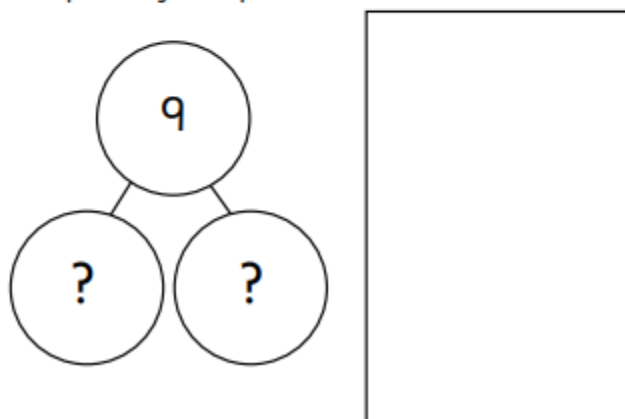
What could the missing parts be?

Complete the part-whole models.



What is the same and what is different about the part-whole models?

List all the different ways you can complete the parts of this part-whole model.



Ben has made a mistake in his part-whole model.

Spot and explain Ben's mistake.

